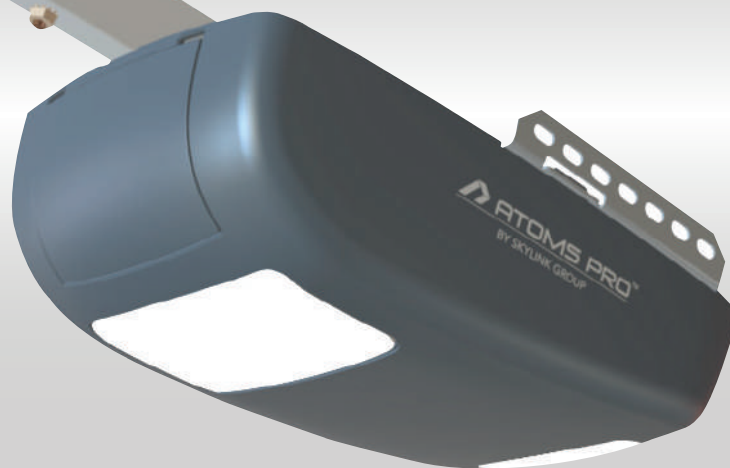


## ATR-6912P 1-1/4 HPf DC ATOMS PRO GARAGE DOOR OPENER Residential Door Opener Applications



Three-Button Remote  
MM-318-3



Wall Console  
WB-350



Safety Beam sensor  
ID-001



1 Piece Solid Rail  
(Chain/Belt)

## PERFORMANCE



### Dual Built-in LED Lights

No light bulb to replace as the lifetime LED light is built-in to the opener.



### DC Motor

Ensure extremely quiet and powerful operation.



### Built-in Backup Battery Compatible

The backup battery (sold separately) allows you to operate your garage door opener during power outage.



### Diagnostic Display

Show current status during programming and system error.

## CONNECTIVITY



### Wi-Fi Compatible

Compatible with Skylink Wi-Fi Stick (sold separately) and Obit Home App.



### Monitor Door Status

Receive Push Notification on your Smartphone when garage door opener is activated.



### Operate Door Remotely with Obit Home App

Remotely Open and close the garage door.



### Live Video Surveillance

View and record any activity in the garage with Obit Home App and optional camera (WC400PHB sold separately)

## SAFETY AND SECURITY



### Rolling code

Encrypted code is generated with every remote activation.



### Passcode Protected Remote Control

Enable the passcode feature to unlock the remote control. (Only for 3-button remote).



### Tamper Proof Trolley

Tamper-Proof trolley design provides peace of mind and added security to prevent forcible entry.



### Automatic Door Close Timer

Programmable timer to close the door automatically.



### Visual / Audio Alert

Flashing light and beeping alert when the door is about to close on Automatic Door Close Timer Mode.

# Optional Accessories



Wireless Wall Console



Wireless Safety Sensors



Skylink Orbit Home Wi-Fi Adapter



Backup Battery



Keypad



Keychain / Visor Remotes



## STANDARD SPECIFICATIONS

### DIMENSIONS

- Installed Length
  - 7' Rail 123"
  - 8' Rail 135"
  - 10' Rail 159"
- Maximum Lifting weight:
  - 1200N / 1-1/4HPF: 90lbs
- Maximum Door Opening:
  - 7' max 7'6"
  - 8' max 8'6"
  - 10' max 10'6"
- Min. Headroom Clearance Required:
  - Belt: 2" Chain : 2"

### MM-REMOTE CONTROL

- Rolling Code Technology
- Operating Range: 300'(Open Area)
- Operating Temperature: -22F to 150F
- Battery: 3-Volt Lithium
- Frequency: 318 MHz

### CARTONS

- Number of Cartons: 2
- Carton 1 : Dimensions and Contents:
  - 20-1/2" x 8-1/2" x 11-1/2"
  - Garage Door Opener Head
  - WB-350, Wall Console
  - MM-318-3, 1x Three-Button Remote Control
  - Photo-eye Safety reversing system
  - Instruction/Maintenance manual
- Carton 2 : Dimensions and Contents:
  - 7' Rail, 117" x 4" x 4.1"
  - 8' Rail, 130" x 4" x 4.1"
  - 10 Rail, 153" x 4" x 4.1"
- Assembled Solid Rectangular Tube Rail with pre-wrapped chain or belt and attached front pulley.

### CONVENIENCE / SAFETY

- Auto Force:
  - Down travel safety reversing sensor
  - Up travel safety stop sensor
- Emergency Quick Release
- Automatic Trolley Reconnect
- Photo-eye Beam Obstructed Auto Reverse
- Lights on Door Open / Close
- In-car Remote Compatible
- Wall control or Remote activation during door travel to stop door for ventilation
- Orbit Home Compatible - Smartphone Control
- The Remote will only transmit the signal for 3 seconds to prevent battery drain in case the button is accidentally held down

## ELECTRICAL SPECIFICATIONS

### POWER

- Voltage: 120V AC, 60Hz
- Operation Rating: 120W
- Current Rating: 1.2A, Maximum 2A
- Standard Listings: ETL (Conforms to UL STD.325)
- Length of Line Cord: 4' (3-prong)

### LIGHTING

- Built-in LED
- Maximum Wattage: 12W+5W
- Lumens: 2200 lm
- Length of Light on Delay: 3 Minutes
- Type of Light Delay: Solid-State

## MECHANICAL SPECIFICATIONS

### MOTOR

- 18V DC Motor
- 1200N, 1-1/4HPf equivalent
- RPM: 1,852
- Thermal Protection: Automatic
- Lubrication: Permanent

### DRIVE MECHANISM

- Drive Means: Steel Reinforced Belt or Heavy Duty Chain.
- Reduction Means: Gear 16:1
- Door Linkage: Adjustable Door Arm

### ADJUSTMENTS

- Auto Force
- Electronic Limit Settings

### TRAVEL RATE

- Approximately 8" per second

### SHIPPING WEIGHTS

- Head: 17lbs
- Belt Rail: 7' 12lbs, 8' 13lbs, 10' 15lbs
- Chain Rail: 7' 14lbs, 8' 15lbs, 10' 18lbs

### MATERIALS

- Chassis: Steel
- Chassis Cover: Plastic
- Rail: Rolled Steel
- Trolley: Plastic

### WARRANTY

- Lifetime Motor Warranty
- 5 years parts Warranty
- Lifetime Belt Warranty
- 1 Year Accessories Warranty